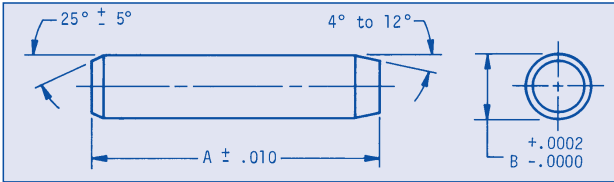


DOWEL PINS

HARDENED-PRESS FIT

1/16 to 3/8 DIAMETERS
3/16 to 1-1/2 LENGTHS



Material: 416 Stainless Steel
Hardened to: 36-40 Rockwell C

ORDER BY CATALOG NUMBER

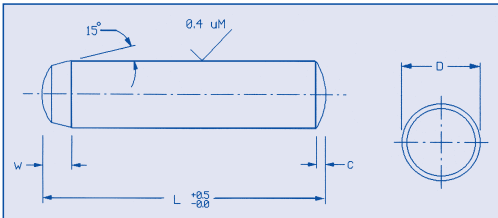
A	1/16 DIA. PIN B=.0626	3/32 DIA. PIN B=.0939	1/8 DIA. PIN B=.1251	5/32 DIA. PIN B=.1563
	Cat. No.	Cat. No.	Cat. No.	Cat. No.
3/16	EPS-D1-1	EPS-D2-1	EPS-D3-1	-
1/4	EPS-D1-2	EPS-D2-2	EPS-D3-2	-
5/16	EPS-D1-3	EPS-D2-3	EPS-D3-3	-
3/8	EPS-D1-4	EPS-D2-4	EPS-D3-4	EPS-D4-4
7/16	EPS-D1-5	EPS-D2-5	EPS-D3-5	EPS-D4-5
1/2	EPS-D1-6	EPS-D2-6	EPS-D3-6	EPS-D4-6
5/8	EPS-D1-7	EPS-D2-7	EPS-D3-7	EPS-D4-7
3/4	EPS-D1-8	EPS-D2-8	EPS-D3-8	EPS-D4-8
7/8	EPS-D1-9	EPS-D2-9	EPS-D3-9	EPS-D4-9
1	EPS-D1-10	EPS-D2-10	EPS-D3-10	EPS-D4-10

A	3/16 DIA. PIN B=.1876	1/4 DIA. PIN. B=.2501	5/16 DIA. PIN B=.3126	3/8 DIA. PIN B=.3751
	Cat. No.	Cat. No.	Cat. No.	Cat. No.
3/8	EPS-D5-1	-	-	-
1/2	EPS-D5-2	EPS-D6-2	-	-
5/8	EPS-D5-3	EPS-D6-3	EPS-D7-3	-
3/4	EPS-D5-4	EPS-D6-4	EPS-D7-4	EPS-D8-4
1	EPS-D5-5	EPS-D6-5	EPS-D7-5	EPS-D8-5
1-1/4	EPS-D5-6	EPS-D6-6	EPS-D7-6	EPS-D8-6
1-1/2	EPS-D5-7	EPS-D6-7	EPS-D7-7	EPS-D8-7

METRIC HARDENED DOWEL PINS

All Dimensions in Millimeters 2, 2.5, 3,
4, 5, 6, 8, 10 mm Diameters
Tolerance: M6

New



Conforming to DIN6325

Material: 416 Stainless Steel
Hardened: 36-42 Rockwell C

L	D=2 W=0.78 C=0.3	D=2.5 W=0.95 C=0.4	D=3 W=1.1 C=0.45	D=4 W=1.4 C=0.6
	5	EPS-E2-1	EPS-E3-1	-
6	EPS-E2-2	EPS-E3-2	EPS-E4-2	-
8	EPS-E2-3	EPS-E3-3	EPS-E4-3	-
10	EPS-E2-4	EPS-E3-4	EPS-E4-4	EPS-E5-4
12	EPS-E2-5	EPS-E3-5	EPS-E4-5	EPS-E5-5
14	EPS-E2-6	EPS-E3-6	EPS-E4-6	EPS-E5-6
16	EPS-E2-7	EPS-E3-7	EPS-E4-7	EPS-E5-7
20	EPS-E2-8	EPS-E3-8	EPS-E4-8	EPS-E5-8
24	EPS-E2-9	EPS-E3-9	EPS-E4-9	EPS-E5-9

L	D=5 W=1.7 C=0.75	D=6 W=2.1 C=0.9	D=8 W=2.6 C=1.2	D=10 W=3.0 C=1.5
	10	EPS-E6-1	-	-
12	EPS-E6-2	EPS-E7-2	-	-
16	EPS-E6-3	EPS-E7-3	EPS-E8-3	-
20	EPS-E6-4	EPS-E7-4	EPS-E8-4	EPS-E9-4
24	EPS-E6-5	EPS-E7-5	EPS-E8-5	EPS-E9-5
30	EPS-E6-6	EPS-E7-6	EPS-E8-6	EPS-E9-6
40	-	EPS-E7-7	EPS-E8-7	EPS-E9-7

NORDEX

(800) 243-0986 24E
In CT (203) 775-4877