

DOWEL PINS - METRIC

ISO 2338, TOLERANCE m6

1 MM - 10 MM DIAMETERS
4 MM - 50 MM LENGTHS

DIAMETER
OVER TO

DIAMETER
TOLERANCE

0 - 3

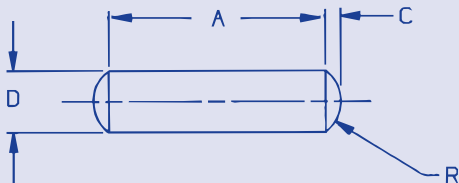
+ ,002 + ,008

3 - 6

+ ,004 + ,012

6 - 10

+ ,006 + ,015



E

Material: Stainless Steel A1 (18-8)

Dimensions in millimeters

ORDER BY CATALOG NUMBER

LENGTH	D = 1 C = 0,15 R = 1	D = 1,5 C = 0,23 R = 1,6	D = 2 C = 0,3 R = 2	D = 2,5 C = 0,4 R = 2,5	D = 3 C = 0,45 R = 3
A	Cat. No.	Cat. No.	Cat. No.	Cat. No.	Cat. No.
4	EPS-M0-1	EPS-M1-1	-	-	-
5	EPS-M0-2	EPS-M1-2	EPS-M2-2	EPS-M3-2	-
6	EPS-M0-3	EPS-M1-3	EPS-M2-3	EPS-M3-3	EPS-M4-3
8	EPS-M0-4	EPS-M1-4	EPS-M2-4	EPS-M3-4	EPS-M4-4
10	EPS-M0-5	EPS-M1-5	EPS-M2-5	EPS-M3-5	EPS-M4-5
12	EPS-M0-6	EPS-M1-6	EPS-M2-6	EPS-M3-6	EPS-M4-6
14	-	EPS-M1-7	EPS-M2-7	EPS-M3-7	EPS-M4-7
16	-	EPS-M1-8	EPS-M2-8	EPS-M3-8	EPS-M4-8
20	-	-	EPS-M2-9	EPS-M3-9	EPS-M4-9
24	-	-	EPS-M2-10	EPS-M3-10	EPS-M4-10
30	-	-	-	EPS-M3-11	EPS-M4-11

LENGTH	D = 4 C = 0,6 R = 4	D = 5 C = 0,75 R = 5	D = 6 C = 0,9 R = 6	D = 8 C = 1,2 R = 8	D = 10 C = 1,5 R = 10
A	Cat. No.	Cat. No.	Cat. No.	Cat. No.	Cat. No.
6	EPS-M5-1	EPS-M6-1	-	-	-
8	EPS-M5-2	EPS-M6-2	-	-	-
10	EPS-M5-3	EPS-M6-3	EPS-M7-3	-	-
12	EPS-M5-4	EPS-M6-4	EPS-M7-4	EPS-M8-4	-
14	EPS-M5-5	EPS-M6-5	EPS-M7-5	EPS-M8-5	-
16	EPS-M5-6	EPS-M6-6	EPS-M7-6	EPS-M8-6	EPS-M9-6
20	EPS-M5-7	EPS-M6-7	EPS-M7-7	EPS-M8-7	EPS-M9-7
24	EPS-M5-8	EPS-M6-8	EPS-M7-8	EPS-M8-8	EPS-M9-8
30	EPS-M5-9	EPS-M6-9	EPS-M7-9	EPS-M8-9	EPS-M9-9
36	EPS-M5-10	EPS-M6-10	EPS-M7-10	EPS-M8-10	EPS-M9-10
40	EPS-M5-11	EPS-M6-11	EPS-M7-11	EPS-M8-11	EPS-M9-11
50	-	EPS-M6-12	EPS-M7-12	EPS-M8-12	EPS-M9-12